

Southern California



Created for free use in the public domain

American Philatelic Society ©2010 • www.stamps.org

Financial support for the development of these album pages provided by Mystic Stamp Company

America's Leading Stamp Dealer and proud of its support of the American Philatelic Society

www.MysticStamp.com, 800-433-7811

Southern California Early History

Juan Rodriguez Cabrillo (ca.149?-1543) 1992 • Scott 2704

Juan Cabrillo led the first European expedition along the west coast, looking for a water route that would connect the Pacific and Atlantic Oceans. In 1542 he sailed into San Diego bay, and sailed further north along the California coastline, possibly as far north as Oregon. Cabrillo is believed to have been buried on Catalina Island.

California Settlement Bicentennial: Carmel Mission Belfry 1969 • Scott 1373

The Carmel Mission is one of the most beautiful of all California missions. This is where two great Franciscan fathers, Junipero Serra and Fermin Francisco de Lasuen, made their headquarters. Eighteen of the 21 California missions were established by these two padres. (The Carmel Mission, pictured on this stamp, wasn't founded until 1770; the first mission, San Diego de Alcalá, was the one founded in 1769.)

Legends of the West John Charles Frémont (1813- 1890) 1994 • Scott 2869i

John Fremont is known for leading expeditions into western United States. He became the first to see Lake Tahoe, the Great Basin, and the Sierra Nevada. Fremont was one of California's first state senators, and in 1856 was the Republican Party's first presidential nominee.

Sutter's Mill: California Gold Rush Centennial 1948 • Scott 954

One hundred years before this stamp was issued, at a sawmill owned by John Sutter, an employee found several flakes of gold that would begin the California Gold Rush. Although Sutter attempted to keep the find a secret, soon the small outpost became a busy with people from the eastern states seeking to make their fortunes.

Trans-Mississippi Exposition Western Mining Prospector 1998 • Scott 3209g

(Reissue of the 1898 Trans-Mississippi Exposition, Scott 291.) In 1848, James Wilson Marshall discovered gold in California. By the summer of 1849 the "gold rush" had began. This stamp honors those western miners prospecting for gold.

California Gold Rush 1849 1999 • Scott 3316

After gold was found near San Francisco, gold-seekers streamed into California. As a result of the impact of the "49er's" many new towns, roads, schools, and churches were built throughout California. This stamp celebrates the 150 year anniversary of the California Gold Rush.

Tourmaline 1974 • Scott 1539

Although California's tourmalines have been used by Native Americans for centuries, they were not discovered by the gemstone industry until the 1880s. California tourmalines come in many colors, bicolors, and tricolors, but the bright pinks are the most desired of the gem. One of the world's largest producers of tourmaline is the Himalaya Mine, located in San Diego County.

© 2010 — *The Scott numbers are the copyrighted property of Amos Press Inc., dba Scott Publishing Co. and are used here under a licensing agreement with Scott.*

The marks "Scott" and "Scott's" are Registered in the U.S. Patent and Trademark Office, and are trademarks of Amos Press, Inc. dba Scott Publishing Co. No use may be made of these marks or of material in this publication, which is reprinted from a copyrighted publication of Amos Press, Inc., without the express written permission of Amos Press, Inc., dba Scott Publishing Co., Sidney, Ohio 45365.



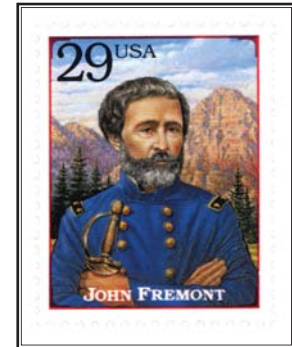
Southern California Early History



Juan Rodriguez Cabrillo
1992 • Scott 2704



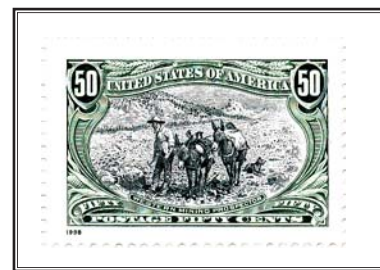
California Settlement Bicentennial
Carmel Mission Belfry
1969 • Scott 1373



Legends of the West
John Charles Frémont
1994 • Scott 2869i



Sutter's Mill
California Gold Rush Centennial
1948 • Scott 954



Trans-Mississippi Exposition
Western Mining Prospector
1998 • Scott 3209g



California Gold Rush 1849
1999 • Scott 3316



Tourmaline
1974 • Scott 1539



Southern California – From Early Mail Service...

Butterfield Overland Mail Centennial: MO & TN to CA 1958 • Scott 1120

In 1850, when California became a state, mail delivery was by ship, either around the southern tip of South America, or to Panama where it was carried across the isthmus then loaded onto another ship for delivery. Eight years later the first expedition of the Butterfield Overland Mail set out from Tipton, Missouri. This allowed the mail to be delivered across a 2,975 mile route — arriving in California in just 25 days.

Legends of the West Overland Mail 1994 • Scott 2869t

Almost a 250,000 men moved into California during the Gold Rush years of 1849–1853, many leaving their families behind. In 1857 Congress voted to subsidize an overland mail service that would guarantee mail delivery in 25 days or less. This stamp commemorates the Overland Mail service whose southern route went from St. Louis, through Texas and Arizona, then up the coastline of southern California and on to San Francisco.

Pony Express: 80th Anniversary 1940 • Scott 894

Even with the Overland Mail service, important information from the eastern states was almost history until it reached California. With the start of the Civil War, it became obvious that a better method of mail delivery was needed. This stamp was issued to celebrate the 80th anniversary of the start of the Pony Express which cut the delivery time for mail from Missouri to California to just ten days.

Pony Express Centennial: St. Joseph, MO to Sacramento, CA 1960 • Scott 1154

The Pony Express consisted of relays of men and horses carrying mail in specially designed saddlebags across a 1,966-mile trail from St. Joseph, Missouri, to Sacramento, California. Many of the riders were youth, often under 15 years of age, partly because of the requirement to weigh less than 125 pounds. Although it was only in existence for just over eighteen months, from April 3, 1860 to October 25, 1861, the Pony Express carried 34,753 pieces of mail and lost only one mail delivery.

...To Statehood

California Statehood Centennial 1950 • Scott 997

The California Republic was founded in 1846 at the beginning of the Mexican-American War. It was admitted to the United States as part of the “Compromise of 1850,” which banned slavery in the state. This stamp honors the one hundredth anniversary of California’s statehood.

California Statehood 2000 • Scott 3438

Following the gold rush of 1849, the people of California realized the need for an effective, civil government. In 1849 a state constitution was adopted. The following year California became the 31st state in the Union. This stamp honors the 150th anniversary of California’s statehood.



Southern California — From Early Mail Service...



Butterfield Overland Mail Centennial
1958 • Scott 1120



Legends of the West
Overland Mail
1994 • Scott 2869t



Pony Express: 80th Anniversary
1940 • Scott 894

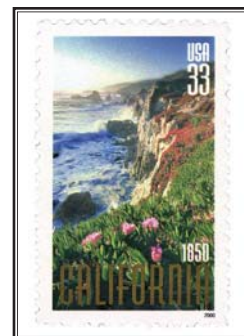


Pony Express Centennial
1960 • Scott 1154

...To Statehood



California Statehood Centennial
1950 • Scott 997



California Statehood
2000 • Scott 3438



Southern California – A Land of Wonders

John Muir (1838-1914) & Redwood Trees 1964 • Scott 1245

John Muir is considered the “Father of the National Parks System.” He campaigned to have the federal government to set aside areas to be preserved in their natural condition, such as Yosemite, the Petrified Forest, and the Grand Canyon. Muir is shown in this stamp alongside the Redwood Trees of California.

American Trees Giant Sequoia 1978 • Scott 1764

The Giant Sequoia grows only along the Pacific Coast in California. These trees live as long as 2,200 years, often grow over 300 feet tall and 20 feet in diameter, with bark that can be over two feet thick. The timber from managed farms of the Giant Sequoia is a valuable commodity.

Wonders of America Pacific Crest Trail: longest hiking trail 2006 • Scott 4043

This stamp is a tribute to the longest hiking trail in the United States. The trail begins in the south near the town of Campo and continues crossing desert valleys and high mountains as it crosses California from south to north. Each year hundreds of visitors travel all or just a portion of the 2,650 mile Pacific Crest Trail.

Wonders of America Coast Redwoods: tallest living trees 2006 • Scott 4063

The Coast Redwood, or sequoia, is the tallest living tree in America. Growing to a height of more than 350 feet, the trees can be 26 feet in diameter, which includes 12 inch thick bark. The trees are often used for railroad ties and railway trestles. This stamp shows the official tree of California – the Coast Redwood.

Wonders of America Great Basin: largest desert 2006 • Scott 4051

The Great Basin is a 200,000 square mile, high-altitude desert covering parts of California, Nevada, Utah, Oregon, and Idaho. It is endorheic, that is, it has no river and no outlet to the sea. As seen on this Wonders of America stamp, it is undoubtedly the largest desert in the United States.

Wonders of America Death Valley: hottest spot 2006 • Scott 4070

Death Valley covers approximately 3,000 square miles near the California/Nevada border. The average high temperatures for the months of June through August is over 110 F. In 1913 a record 134 degrees F was recorded! This stamp depicts the hottest spot in America – Death Valley.



Southern California — A Land of Wonders



John Muir (1838-1914)
& Redwood Trees
1964 • Scott 1245



American Trees
Giant Sequoia
1978 • Scott 1764



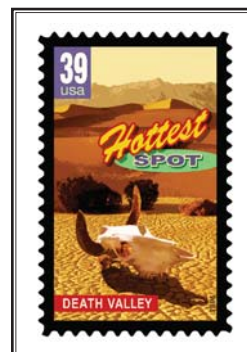
Wonders of America
Pacific Crest Trail: longest hiking trail
2006 • Scott 4043



Wonders of America
Coast Redwoods: tallest living trees
2006 • Scott 4063



Wonders of America
Great Basin: largest desert
2006 • Scott 4051



Wonders of America
Death Valley: hottest spot
2006 • Scott 4070



Southern California – Wonders of the Sea

Nature of America Series

Kelp Forest

2009 • Scott 4423a-j

Creatures of the deep are shown on the *Nature of America: Kelp Forest* stamps issued this year. The kelp forest is a lush undersea ecosystem in which the largest seaweeds, known as kelp, grow as tall as trees. This sheet of ten stamps highlights 27 fish, plants, and animals.



KELP FOREST

11TH IN A SERIES



N A T U R E O F A M E R I C A



Southern California – Signs and Symbols

American Bicentennial: State Flags series California State Flag 1976 • Scott 1663

The California flag was designed in 1846, symbolizing the settlers' revolt against Mexican rule. The single star to the left side of the flag replicated the flag of Texas, and the grizzly bear centered over the word "California Republic" represented the many bears found in the state. The flag, as shown on this stamp, was adopted as the state's flag in 1911.

Flags of Our Nation series California Flag and Coast 2008 • Scott 4279

The original California Flag, referred to as the Bear Flag, was raised for the first time in 1846. This flag was destroyed in the fires that followed the great San Francisco earthquake in 1906. The California coast is shown alongside the flag on this 2008 release.

State Birds & Flowers series California Quail and California Poppy 1982 • Scott 1957

(also Wildflowers series: California Poppy
1992 • Scott 2651)

In 1931, the California legislature adopted the California Quail as its state bird. Also known as the valley quail, it is a prized game bird with a distinguished downward curving plume on top of its head. The California Indians used the golden flowers of the poppy for food and for the oil extracted from the plant. In 1903 it became the state flower. Every year April 6 is California Poppy Day.

Wildlife Conservation series California Condor 1971 • Scott 1430

Five hundred years ago the California Condor could be seen throughout the southwest area of the United States. After nearing extinction, condors have been raised in captivity and released back into the wild. The California Condor, as depicted on this stamp, is the largest North American land bird.

Transportation coil Carreta: Spanish ox-cart 1770s 1988 • Scott 2255

This stamp shows a carreta, a multi-use, two-wheeled wagon pulled by oxen. It was often used by the Hispanic population, especially in the mission era, to haul timber, trade goods and supplies, and even to haul laundry to the river. The wheels were never oiled so the screeching sounds would scare evil spirits away.

State Birds & Flowers series California Gull (Utah State Bird) 1982 • Scott 1996

The California Gull can be found from Canada to California. It is a migratory bird, moving to the Pacific coast for the winter. In 1848, when swarms of crickets invaded Utah, the gull "attacked" the crickets, helping to settlers to save lives. The California Gull is depicted on this Utah State Bird stamp.

North American Wildlife series California Sea lion 1987 • Scott 2329

The California sea lion, as shown on this stamp, lives along the coast from Canada to southern California. It is a social mammal, living in colonies on the rocks and hunting in the sea for food. The sea lion is easily trained, and is often seen doing its tricks at the circus or in the zoo.



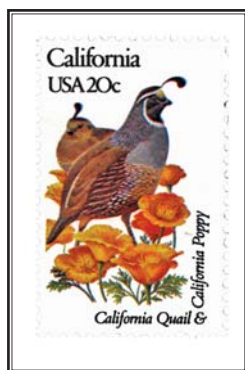
Southern California — Signs and Symbols



American Bicentennial: State Flags series
California State Flag
1976 • Scott 1663



Flags of Our Nation series
California Flag and Coast
2008 • Scott 4279



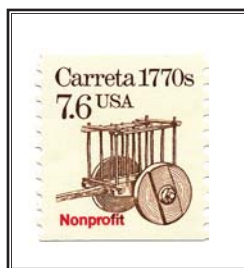
State Birds & Flowers series
California Quail & California Poppy
1982 • Scott 1957



Wildflowers series
California Poppy
1992 • Scott 2651



Wildlife Conservation series
California Condor
1971 • Scott 1430



Transportation coil
Carreta: Spanish ox-cart 1770s
1988 • Scott 2255



State Birds & Flowers series
California Gull (Utah State Bird)
1982 • Scott 1996



North American Wildlife series
California Sea lion
1987 • Scott 2329



Southern California in Space

Naval Aviation: 50th Anniversary 1961 • Scott 1185

The Navy's first aviators were trained at the Naval Air Station, North Island, in the San Diego Bay. This stamp honors the 50th anniversary of Naval Aviation that began just eight years after the Wright brothers flew their manned aircraft in North Carolina.

Probing the Vastness of Space Optical Telescope 2000 • Scott 3409e

When built in 1917 the 100-inch optical telescope at the Mount Wilson Observatory was the largest telescope in the world. It was the first optical interferometer, allowing astronomers to be able to measure the sizes of distant stars.

First Supersonic Flight Muroc Army Air Field, California 1997 • Scott 3173

On October 14, 1947, U.S. Air Force General Charles "Chuck" Yeager flew a specially built XS-1 (Experimental, Supersonic) plane that was able to travel at a speed of 673 miles per hour, faster than the speed of sound. This stamp commemorates that flight — the first controlled supersonic flight.

Palomar Observatory 1948 • Scott 966

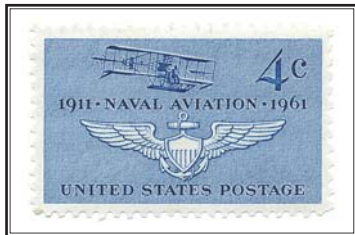
This stamp recognizes the Palomar Observatory. Located in San Diego County, Among other equipment, the observatory houses three "large" telescopes — the 200-inch Hale telescope, the 48-inch Oschin telescope, and a 50-inch reflecting telescope. Using this equipment, astronomers are able to explore space in a way never available before.

Great Americans Robert A. Millikan (1868-1953) 1982 • Scott 1866

Robert Millikan was the first physicist to be able to measure the charge of the electron, and thereby able to determine the number of atoms in a gram of a substance — and the size of the atoms. This stamp shows Millikan, who in 1923 received the Nobel Prize for Physics for his work on the elementary charge of electricity and on the photoelectric effect.



Southern California in Space



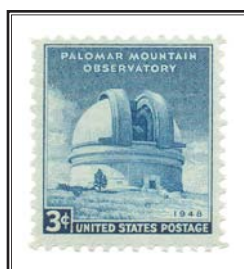
Naval Aviation
1961 • Scott 1185



Probing the Vastness of Space
Optical Telescope
2000 • Scott 3409e



First Supersonic Flight
1997 • Scott 3173



Palomar Observatory
1948 • Scott 966



Great Americans
Robert A. Millikan (1868-1953)
1982 • Scott 1866



Southern California – Space Exploration

Mars Rover Sojourner

1997 • Scott 3178

After a seven month voyage, the Mars Pathfinder entered the Martian atmosphere and landed safely with the help of giant airbags to cushion the impact. The Pathfinder returned billions of bits of information, with more than 17,000 images, including data on the rocks, soil, wind, and weather. The mission was directed by the Jet Propulsion Lab, a division of the California Institute of Technology.

Space Shuttle Challenger

1995 • Scott 2544

In the 1960s NASA began a program whereby manned spacecrafts, after they have been in orbit, are reusable. The Space Shuttle Challenger flew nine missions from 1983 through 1985, landing seven times at Edwards Air Force Base near Los Angeles, California. The Challenger's ten mission ended in a catastrophe when it broke apart just 73 seconds after launching on January 28, 1986, resulting in the death of all seven crew members.

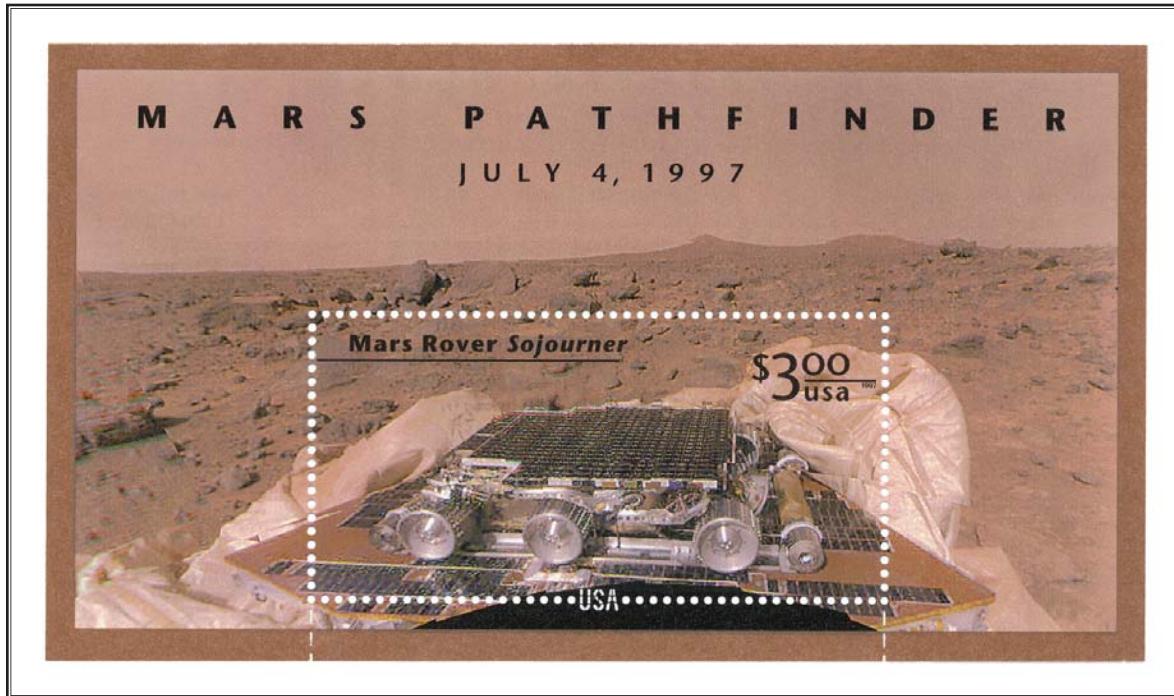
Space Shuttle Endeavor

1995 • Scott 2544a

In 1987 the U.S. Congress approved the construction of the Space Shuttle Endeavor to replace the Challenger. By July, 2009, the Endeavor had completed 23 missions, many taking supplies to the International Space Station. This stamp commemorates the Space Shuttle Endeavor, which has landed several times at the Edwards Air Force Base.



Southern California — Space Exploration



Mars Rover Sojourner
1997 • Scott 3178



Space Shuttle Challenger
1995 • Scott 2544



Space Shuttle Endeavor
1995 • Scott 2544a



Southern California Connections

XXIII Olympiad: Summer Games 1984 • Scott 2082-2085

The Summer Olympics were held in Los Angeles again in 1984. Over 6,800 athletes from 140 nations participated in events in 23 different sports. This was the first year that both Chinese Taipei (Taiwan) and the China (the People's Republic of China) were permitted to play in the same Olympic games. This stamp celebrates the XXIII Olympiad.

Modern American Architecture Walt Disney Concert Hall 2005 • Scott 3910e

This stamp depicts the Walt Disney Concert Hall, the home of the Los Angeles Philharmonic. This downtown Los Angeles performance venue was a gift from the Disney family, as a tribute to Walt Disney's devotion to the arts and to the city of Los Angeles.

X Olympiad: Summer Games 1932 • Scott 718

An international, multi-sport event is held every four years called the Olympics. The Olympics are held in different countries each year. Officially called the X Olympiad, the 1932 event, held in Los Angeles, had 1,332 athletes participate in fourteen sports. This was the first time a victory podium was used and the first that an Olympic Village was built to specially house the athletes.

California-Pacific International Exposition 1935 • Scott 773

This stamp honors the 1935-36 California-Pacific International Exposition which was held at the same site as the 1915 Exposition -- in San Diego's large Balboa Park. The city held the expo to promote the history, arts, science, and industry of the city.

Mendez v. Westminster and the California Board of Education 2007 • Scott 4201

Until the mid-1940s, Hispanics in the Westminster School District were forced to attend school in wooden shacks. In 1944 the Mendez family sued the School District because their children were not permitted to attend an all-white school. This stamp celebrates the 60th anniversary of the groundbreaking legal case in which a group of civic-minded parent successfully sued to end segregation in their schools.



Southern California Connections



XXIII Olympiad: Summer Games
1984 • Scott 2082-2085



X Olympiad: Summer Games
1932 • Scott 718



California-Pacific International
Exposition
1935 • Scott 773



Modern American Architecture
Walt Disney Concert Hall
2005 • Scott 3910e



Mendez v. Westminster and the
California Board of Education
2007 • Scott 4201



Southern California – Famous People

Great Americans

Earl Warren

(1891-1974)

1992 • Scott 2184

Earl Warren is the only person elected three times to be Governor of California, but is probably best known as the 14th Chief Justice of the United States. He was popular across party lines due to his stance on legal issues such as racial segregation and civil rights, the police arrest procedure, and separation of church and state. This stamp honors Earl Warren who is regarded as one of the most influential Supreme Court justices in the history of the United States.

Ronald Reagan

(1911-2004)

2005 • Scott 3897

Born in Illinois, Ronald Reagan moved to California where he began a career as an actor. After joining the Republican Party, he became the 33rd Governor of California. In 1980, he became the 40th U.S. President where he initiated his “Reaganomics,” to control inflation, reduce growth in government spending, and to spur economic growth through tax cuts.

American Arts

Robinson Jeffers

(1887-1962)

1973 • Scott 1485

This stamp shows Robinson Jeffers, a poet known for his writings about the California coast. He is considered an icon of the environmental movement — writing of the rugged beauty of the wild as compared to the degraded condition of modern man. Jeffers is remembered for his epic poetry, as well as short verse.

Richard M. Nixon

(1913-1994)

1995 • Scott 2955

Yorba Linda native Richard Milhous Nixon became the 37th President of the U.S. in 1969. He successfully negotiated a ceasefire with North Vietnam in 1973 and opened diplomatic relations between the U.S. and China. In 1974 he became the only President to resign the office due to his role in the Watergate scandal.

Gen. George S. Patton Jr.

(1885-1945)

1953 • Scott 1026

Born in San Gabriel Township (now San Marino), California, General George Patton was the first officer assigned to the U.S. Tank Corps during World War I. In World War II he commanded the army in Sicily, Northern Africa, and the European Theatre of Operations.

American Journalists

Rubén Salazar

(1928-1970)

2008 • Scott 4251

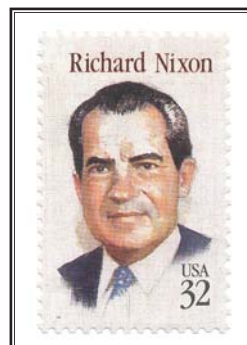
Rubén Salazar was a Mexican-American and a prominent, vocal member of the Los Angeles Chicano community. As a news reporter and columnist for the Los Angeles Times, he was covering the “National Chicano Moratorium March” against the Vietnam War when he was killed by a sheriff’s deputy. His killing was often cited as a symbol of unjust treatment of Chicanos by law enforcement.



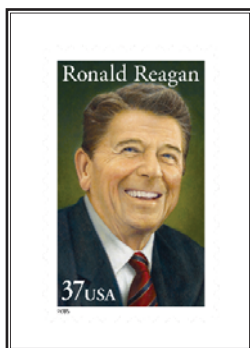
Southern California — Famous People



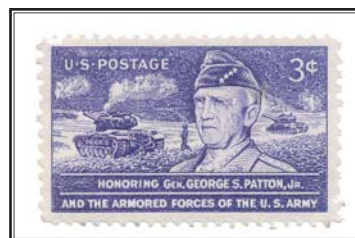
Great Americans
Earl Warren
1992 • Scott 2184



Richard M. Nixon
1995 • Scott 2955



Ronald Reagan
2005 • Scott 3897



Gen. George S. Patton Jr.
1953 • Scott 1026



American Arts
Robinson Jeffers
1973 • Scott 1485



American Journalists
Rubén Salazar
2008 • Scott 4251



Southern California – Charles and Ray Eames

Charles and Ray Eames

2008 • Scott 4333

Honoring the husband-and-wife design team of Charles and Ray Eames, this commemorative sheet of 16 stamps represents the breadth of their extraordinary creative work, which includes architecture, furniture, film, and exhibits. If you've ever sat in a stackable molded chair, you've experienced their creativity.

*Eames furniture designs and the associated Eames trademark are the property of Herman Miller, Inc.



Southern California — Charles and Ray Eames



Charles and Ray Eames
2008 • Scott 4333









THE AMERICAN PHILATELIC SOCIETY

Stamps in this album are shown courtesy the American Philatelic Society Reference Collection, created and sustained through the generosity of APS members. With 38,000 members in 100 countries, the 123-year-old Society is the largest, nonprofit society for stamp collectors in the free world. APS offers services and educational opportunities to broaden your enjoyment of the hobby and enhance your special collecting interests, whatever they may be. The APS is supported entirely by membership dues, gifts, and the sale of its publications and services.

Visit the American Philatelic Society online at www.stamps.org

AMERISTAMP EXPO 2010 February 19–21, 2010

Admission is free to AMERISTAMP EXPO 2010, the winter show of the American Philatelic Society, coming to the Riverside Convention Center February 19–21, 2010. Whether you are eight or 80, learn the ins and outs of one of the world's greatest hobbies. Stamp exhibits, world-class rarities, and priceless historical mail will be shown. Dealers from the U.S. and abroad will have everything you need to pursue the stamp hobby, with helpful seminars and how-to sessions, catering to interest of every kind. If you have an old collection, "Stamps in Your Attic" will give free thumbnail evaluations of what you have throughout the show, sponsored by the National Stamp Dealers Association. AMERISTAMP EXPO is open Friday and Saturday 10 a.m. to 6 p.m., and Sunday from 10 a.m. to 4 p.m. To learn more, visit <http://www.stamps.org/Ameristamp/index.htm>.



Yours Free — Mystic's U.S. Stamp Catalog

A must for every stamp collector. Enjoy 132 pages of color stamp photographs, valuable collecting tips, fascinating history, plus much more. Complete listing of U.S. postage stamps including Commemoratives, Air Mails, and Duck Stamps. Also albums and collecting supplies.

Request at www.MysticStamp.com, 800-433-7811 or write to Mystic at 9700 Mill Street, Camden, NY 13316

